



TTRA TARGETED TRANSLATION
RESEARCH ACCELERATOR
DIABETES + CARDIOVASCULAR DISEASE

TTRA INFORMATION SESSION: Funding call for Research Projects



TUESDAY 12 OCTOBER 2021 | 11:00AM-12:15PM AEDT



Australian Government
Department of Industry, Science,
Energy and Resources

Industry
Growth
Centres

MTPConnect

→ Championing a sector-led approach to accelerating the growth of the
medical technology, biotechnology and pharmaceutical ecosystem in Australia

WELCOME & ACKNOWLEDGEMENT OF COUNTRY



Lauren Kelly
Senior Director | TTRA Program

HOUSEKEEPING



For information please contact
TTRA-DCVD@MTPCONNECT.ORG.AU

QUESTIONS



Q&A



- Please enter questions in the **Q&A BOX** (*not the CHAT box*)
- You can **SUBMIT ANONYMOUSLY** – Just click the checkbox
- **Have the same question as someone else?**
You can UPVOTE a question by clicking the THUMBS UP

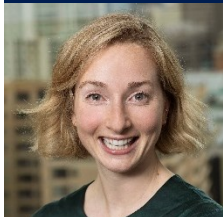
RECORDING



- This webinar will be recorded and slides published **within 48 hours** – We'll email you when they're ready!
- View the **ON-DEMAND VIDEO** at mtpconnect.org.au/webinars
- Listen by subscribing to **THE MTPCONNECT PODCAST**
Available on Apple Podcasts, Spotify and on our website

THE TTRA TEAM

MTPCONNECT



Lauren Kelly

Senior Director | TTRA Program
MTPConnect



Dr Mana Liao

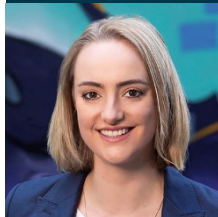
Director | TTRA Program
MTPConnect



Dr Erin McAllum

Project Manager | TTRA Program
MTPConnect

TTRA PROJECT PARTNERS



Grace Lethlean

Co-Founder & Chief Product Officer



Olivia White

National Program Manager



Dr Leigh Ford

TTRA Project Manager

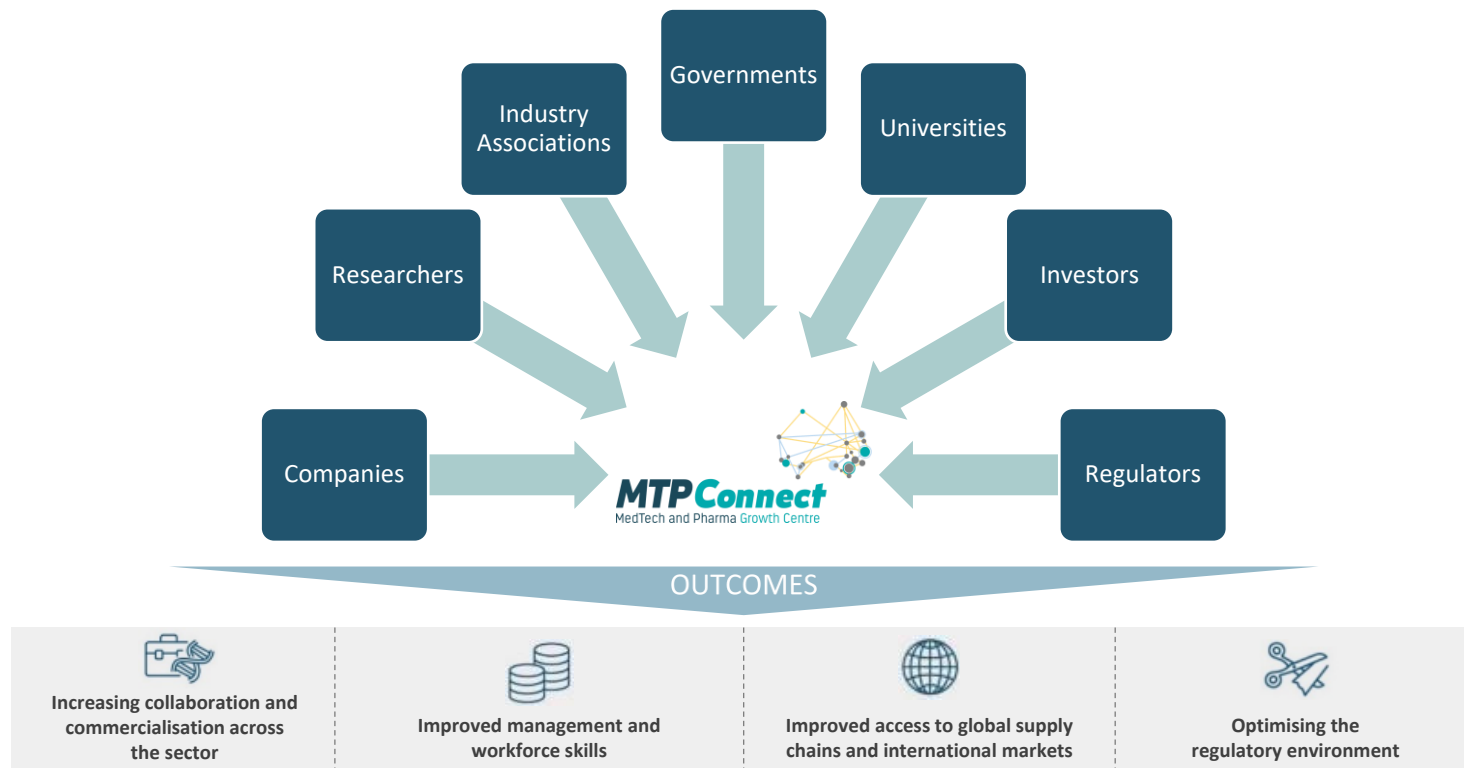


INTRODUCTION



Dr Dan Grant
Managing Director & CEO

ACCELERATING THE GROWTH OF THE MTP SECTOR



OVERVIEW OF MTPCONNECT INITIATIVES



Department of Industry,
Science, Energy and
Resources

\$15.6M

- Fully committed
- 40 Projects



Department of Health
Medical Research
Future Fund

\$45M

- Fully committed
- 41 projects



Department of Health
Medical Research
Future Fund

\$22.3M

- Fully committed
- 21 projects
- 3 program partners



Department of Health
Medical Research
Future Fund

\$32M

- 13 program partners
- Building the MTP workforce
- Addressing skills gaps
- Enhancing entrepreneurial ecosystem



Department of Health
Medical Research
Future Fund

\$47M

- D&CVD focus
- 3 program partners
- Establish two Research Centres
- Annual funding rounds for Research Projects

MRFF \$47 MILLION - TTRA PROGRAM



RESEARCH CENTRES (Pillar 1)

CENTRE #1

CENTRE #2

Needs Assessment

DIABETES
COMPLICATIONS



CARDIOVASCULAR
DISEASE
COMPLICATIONS



Year 0

Year 1

Year 2

Year 3

Year 4



RESEARCH PROJECTS (Pillar 2)

Round 1

Round 2

Round 3

Needs
Assessment

D&CVD
7 Projects
\$5.2M &
\$9.1M co-
funding

Needs
Assessment

D&CVD



Needs
Assessment

D&CVD



PARTNERS



UNIQUEST

GOVERNANCE



Prof. Ian Frazer AC (Chair)

Professor of Medicine
University of Queensland



Hon. Judi Moylan AO

Former Chair
Diabetes Australia



Mike Wilson OAM

Chief Executive Officer
JDRF



Rebecca Davies AO

Director, Lifehouse
Director, The Actuator



Prof. James Best AO

Former Dean
Lee Kong Chian School of Medicine



Prof. Rachel Huxley

Executive Dean – Faculty of Health
Deakin University



Yasser El-Ansary

Chief Executive Officer
Australian Investment Council

NEEDS ASSESSMENT 2.0

Needs Assessment Partners:



MONASH
SUSTAINABLE
DEVELOPMENT
INSTITUTE

BehaviourWorks
AUSTRALIA

**RESEARCH
AUSTRALIA**
CONNECTING • ENGAGING • INFLUENCING

SCOPE

180 individuals

LONG LIST

>500 priorities

SHORT LIST

23-30 unique areas

PRIORITIES SET

5 priority areas

Health Service Delivery /
Equitable Access

ROUND 2 PRIORITY AREAS

Priority 1: Atherosclerosis, including cerebrovascular disease

Priority 2: Cardiomyopathy and heart failure

Priority 3: Obesity as it relates to diabetes

Priority 4: Mental health as it relates to diabetes

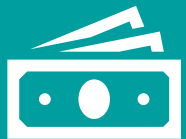
Priority 5: Glucose control in T1D, T2D, double diabetes and/or GDM

RESEARCH PROJECTS



Dr Erin McAllum
Project Manager | TTRA Program

RESEARCH PROJECTS OVERVIEW



\$200K - \$750K
24 months



50% co-
contribution



Modalities

Digital Health

Medical
Devices

Therapeutics

Behavioural
Interventions



Towards value
inflection



Consultation &
Mentoring



Value Add /
Partnering Summit

ELIGIBILITY

Applicants must have an **Australian Business Number** (ABN)

Eligible entities receiving TTRA funding include: MRIs, universities, corporations, or corporate Commonwealth, state or territory government entities

Corporations must have less than 200 employees

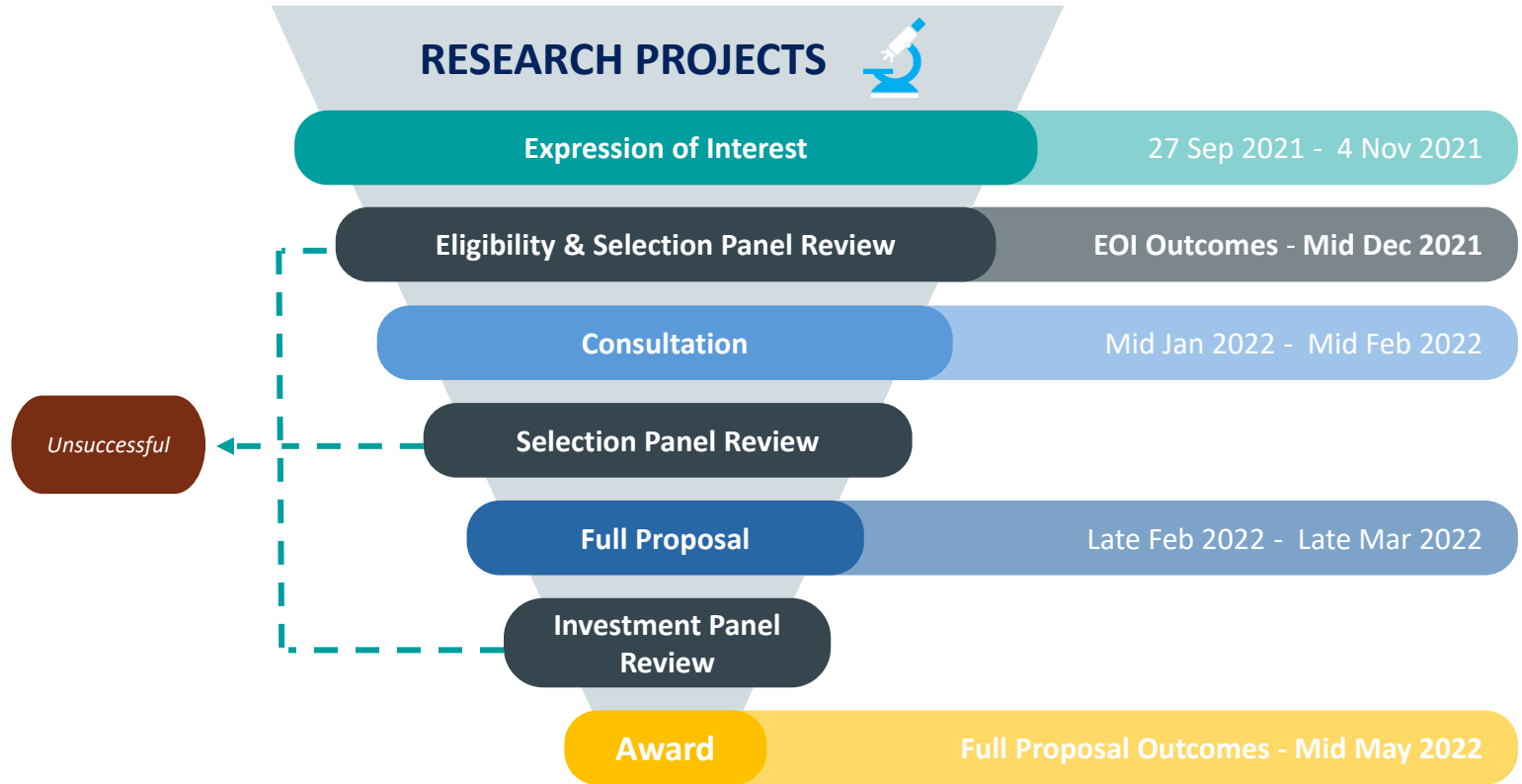
Demonstrated capacity to match the **co-contribution** requirement

Research Project must address **one** of the identified Priority Areas, and must be applicable in markets beyond Australia

Applicants must **control** or **have legal right to access and use relevant IP**

- Background IP, Project IP, not infringing on third party IP

APPLICATION PROCESS



SELECTION CRITERIA

Selection Criteria Themes – 20% each

Challenge &
Solution



Technical
Merit



Project
Plan



Commercialisation/
Implementation



Team &
Capabilities



Digital Health
Medical Devices
Therapeutics
Behavioural Interventions

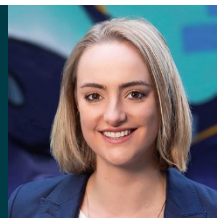
Digital Health
Medical Devices
Therapeutics
Behavioural Interventions

PANEL DISCUSSION



Dr Mana Liao

Director | TTRA Program
MTPConnect



Grace Lethlean

Co-Founder & Chief Product Officer



Dr Leigh Ford

TTRA Project Manager
UNIQUEST



Olivia White

National Program Manager



Challenge & Solution



20%

- **Alignment with Priority Area**
- **Hook, tell a story, grantsmanship**
- **Differentiation from existing care options, articulate competitors**
- **Consider access and health service delivery**
- **“Show Me the Money” MTPConnect webinar**

Technical
Merit



20%

Digital Health

- Differentiate end-user, payer and beneficiary
- Solves pain point
- Scalability and fit with existing workflow/patient journey

Medical Device

- Technology Readiness Level (TRL)
- Stakeholder engagement and product co-design
- Manufacturing and implementation plan

Therapeutics

- Target validation
- Robust dataset – reproducible, controlled and standardised
- Safety risk assessment

**Behavioural
Intervention**

- Evidence-based biomedical and psychosocial benefits
- End-user demand/clinical support over existing solutions
- Barriers to adoption and mitigation plan

The modality stream that you choose is dependent on ‘where the project’s novelty and core differentiation lies’

Project Plan



20%

- Don't be vague
- Be concise (dot points) and articulate the TTRA funded project activities
- Justify why these activities lead to key translational milestones (no extraneous work)
- Be open about risks, consider feasible management/mitigation strategies
- Realistic budget

Commercialisation/ Implementation



20%

| | |
|-----------------------------------|---|
| IP | <ul style="list-style-type: none">• IP eligibility flow chart (pg. 10 Funding Guidelines)• Robust and feasible IP strategy is key |
| Clinical & Regulatory | <ul style="list-style-type: none">• Clinical development plan relevant to your patient population• Appropriate regulatory pathway/strategy (if applicable) |
| Market | <ul style="list-style-type: none">• Ultimate payer for your product/solution• Addressable market size |
| Commercialisation Strategy | <ul style="list-style-type: none">• When will you partner/licence/sell and to whom; if taking to market yourself, how will you achieve this?• Identified commercial proof-of-concept |
| Implementation Strategy | <ul style="list-style-type: none">• Who will implement and pay for your solution, how will this be sustainable? |

Team & Capabilities



20%

- **More than just CVs**
- **Opportunity to discuss your team in its entirety, including external consultants/contractors**
- **Teams should be multidisciplinary - no skills gaps**
- **Total project FTE needs to be appropriate**
- **Diversity is not just a tick-box**

Research Projects

Round 2 Expressions Of Interest Are Now Open, Closing 4 November 2021 4pm AEDT

This opportunity is offered by the Commonwealth under the Targeted Translation Research Accelerator (TTRA) Program which forms part of the Medical Research Future Fund (MRFF).

The TTRA Research Projects funding can provide between \$200,000 - \$750,000 to help eligible organisations develop innovative preventative, diagnostic, therapeutic and/or disease management products/solutions for identified priorities associated with diabetes and cardiovascular disease.

TTRA Research Projects Round 2 Expressions of Interests must address one of the following Priority Areas:

- Priority 1: Atherosclerosis, including cerebrovascular disease
- Priority 2: Cardiomyopathy and heart failure
- Priority 3: Obesity as it relates to diabetes
- Priority 4: Mental health as it relates to diabetes
- Priority 5: Glucose control in type 1 diabetes (T1D), type 2 diabetes (T2D), double diabetes and/or gestational diabetes mellitus (GDM)

The project term for funded TTRA Research Projects is a maximum of 24 months. Applicants will be required to provide a co-contribution to the value of 50% of the TTRA funding request to be eligible. Additional in-kind or cash contributions above this threshold will be viewed favourably.

Please review the detailed Funding Guidelines for further information about eligibility and the application process. All submissions must be made through SmartyGrants with a link provided below. The sample EOI application form provides an overview of what is required in your EOI.

Join our Zoom Information Session on Tuesday 12 October at 11:00am AEDT to learn more – [register here](#).

For queries, please contact the TTRA team via email at ttra-dcvd@mtpconnect.org.au.

[TTRA R2 Funding Guidelines](#)[Sample EOI Application Form](#)[Apply Here](#)

TTRA RESEARCH PROJECTS

- EOI now open!
- Round 2: Submissions will close at 16:00 AEDT on 4 Nov 2021
- Round 3: Launch Mid 2022

www.mtpconnect.org.au

Thanks for connecting with us.

- Please take a moment to leave us some FEEDBACK
- Just CLICK THE SURVEY LINK that will appear when you log out. Yes, it is ANONYMOUS and QUICK!



For further information please contact:
TTRA-DCVD@MTPCONNECT.ORG.AU